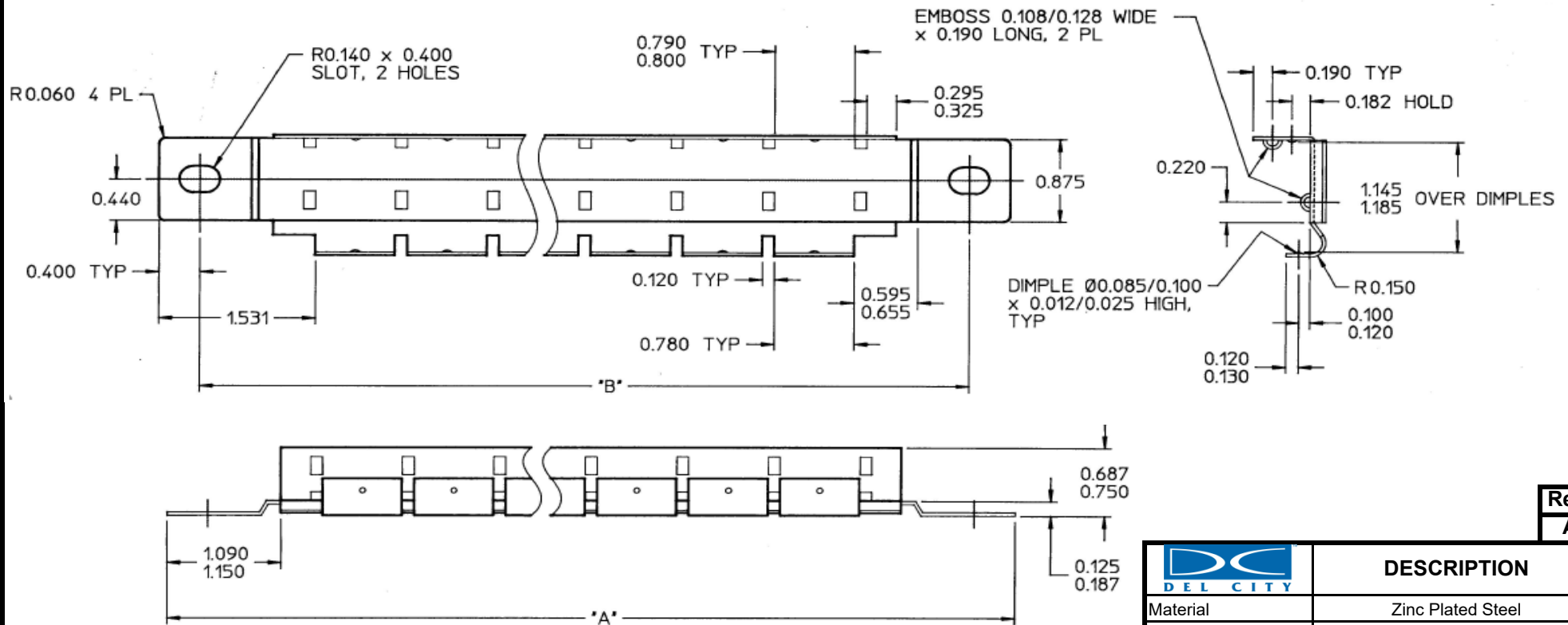



P/N	Number of Slots	A (in)	B (in)
72025	2	4.810	4.000
72033	3	5.710	4.860
72045	4	6.620	5.810
72065	6	8.430	7.620
72066	8	10.250	9.430



Rev.
A

	DESCRIPTION
Material	Zinc Plated Steel
Material Thickness	0.036" (20 GA.)
Compatible Circuit Breakers	Stud Mount S.A.E. Type I (Auto Reset) & Type II (Modified Reset) Breakers, w/o Brackets
Stud Mount Circuit Breaker Mounting Bracket	
DATE:	PART #:
6/12/2020	See Chart

*Part not drawn to scale.
¥Uncontrolled Copy

Page:
1 of 1